

JAMA | Original Investigation | CARING FOR THE CRITICALLY ILL PATIENT

# Intubation Practices and Adverse Peri-intubation Events in Critically Ill Patients From 29 Countries

JAMA. 2021;325(12):1164-1172.

doi:10.1001/jama.2021.1727

Vincenzo Russotto, MD; Sheila Nainan Myatra, MD; John G. Laffey, MD, MA; Elena Tassistro, MS; Laura Antolini, PhD; Philippe Bauer, MD, PhD; Jean Baptiste Lascarrou, MD, PhD; Konstanty Szułdrzyński, MD, PhD; Luigi Camporota, MD; Paolo Pelosi, MD; Massimiliano Sorbello, MD; Andy Higgs, MD; Robert Greif, MD; Christian Putensen, MD; Christina Agvald-Öhman, MD, PhD; Athanasios Chalkias, MD, PhD; Kristaps Bokums, MD; David Brewster, MD; Emanuela Rossi, MS; Roberto Fumagalli, MD; Antonio Pesenti, MD; Giuseppe Foti, MD; Giacomo Bellani, MD, PhD; for the INTUBE Study Investigators **Corresponding Author:** John G.Laffey

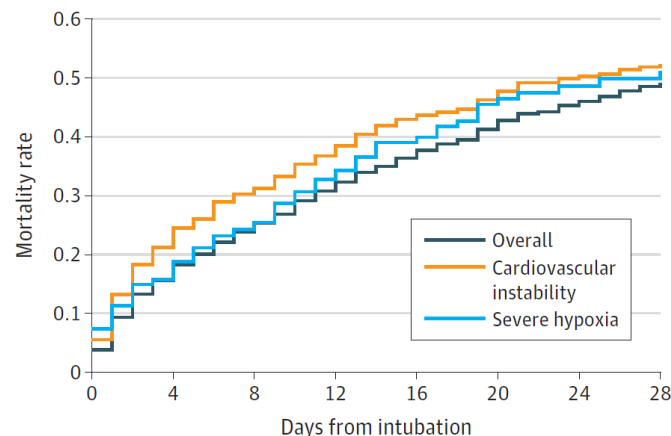
## Key Points

**Question** Among critically ill patients undergoing tracheal intubation worldwide, how common are major adverse events during the peri-intubation period?

**Findings** In this prospective observational study that included 2964 patients from 197 sites across 29 countries from October 2018 to July 2019, at least one major clinical event occurred after intubation in 45.2% of patients, including cardiovascular instability in 42.6%, severe hypoxemia in 9.3%, and cardiac arrest in 3.1%.

**Meaning** Among an international sample of critically ill patients undergoing tracheal intubation, major cardiopulmonary events occurred frequently.

Figure 2. Mortality Rate by Days From Intubation<sup>a</sup>



No. at risk	0	4	8	12	16	20	24	28
Overall	2898	1954	1242	860	616	445	331	254
Cardiovascular instability	1135	744	491	339	251	186	137	111
Severe hypoxia	259	194	129	90	68	55	44	38

JAMA | **Original Investigation** | CARING FOR THE CRITICALLY ILL PATIENT

## Intubation Practices and Adverse Peri-intubation Events in Critically Ill Patients From 29 Countries

JAMA. 2021;325(12):1164-1172.

[doi:10.1001/jama.2021.1727](https://doi.org/10.1001/jama.2021.1727)

Vincenzo Russotto, MD; Sheila Nainan Myatra, MD; John G. Laffey, MD, MA; Elena Tassistro, MS; Laura Antolini, PhD; Philippe Bauer, MD, PhD; Jean Baptiste Lascarrou, MD, PhD; Konstanty Szułdrzyński, MD, PhD; Luigi Camporota, MD; Paolo Pelosi, MD; Massimiliano Sorbello, MD; Andy Higgs, MD; Robert Greif, MD; Christian Putensen, MD; Christina Agvald-Öhman, MD, PhD; Athanasios Chalkias, MD, PhD; Kristaps Bokums, MD; David Brewster, MD; Emanuela Rossi, MS; Roberto Fumagalli, MD; Antonio Pesenti, MD; Giuseppe Foti, MD; Giacomo Bellani, MD, PhD; for the INTUBE Study Investigators **Corresponding Author:** John G.Laffey



John Laffey